



Online Low Temperature Plasma (OLTP) Seminar Series

#s1741, Tuesday, 20 Feb 2024, 10:00am

Low temperature plasma life innovations: Functional reaction networks of radical chemistry

Kenji Ishikawa

Nagoya University Center for low temperature plasma science

ishikawa.kenji@nagoya-u.jp

Keigo Takeda, Shinji Yoshimura, Takashi Kondo, Hiromasa Tanaka, Shinya Toyokuni, Kae Nakamura, Hiroaki Kajiyama, Masaaki Mizuno & Masaru Hori

Center for low-temperature plasma sciences

Nagoya University plasma science platform – 165 of originally-developed apparatus
– for low-temperature plasma sciences and innovations




- Fundamental, basic (source, diagnostics)
- Green & nano, DX
- Bio, medicine & agri
- Semiconductor







FREE RADICAL RESEARCH
<https://doi.org/10.1080/10715762.2023.2230351>



REVIEW ARTICLE

 OPEN ACCESS  Check for updates

Generation and measurement of low-temperature plasma for cancer therapy: a historical review

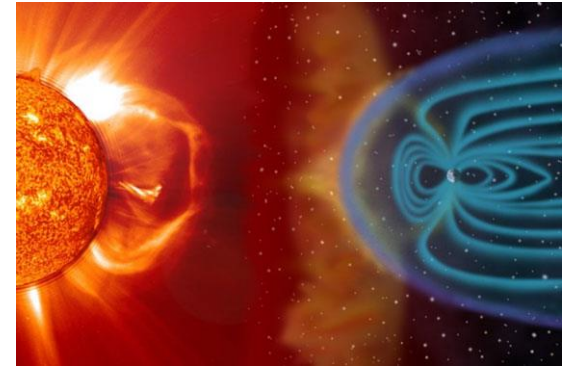
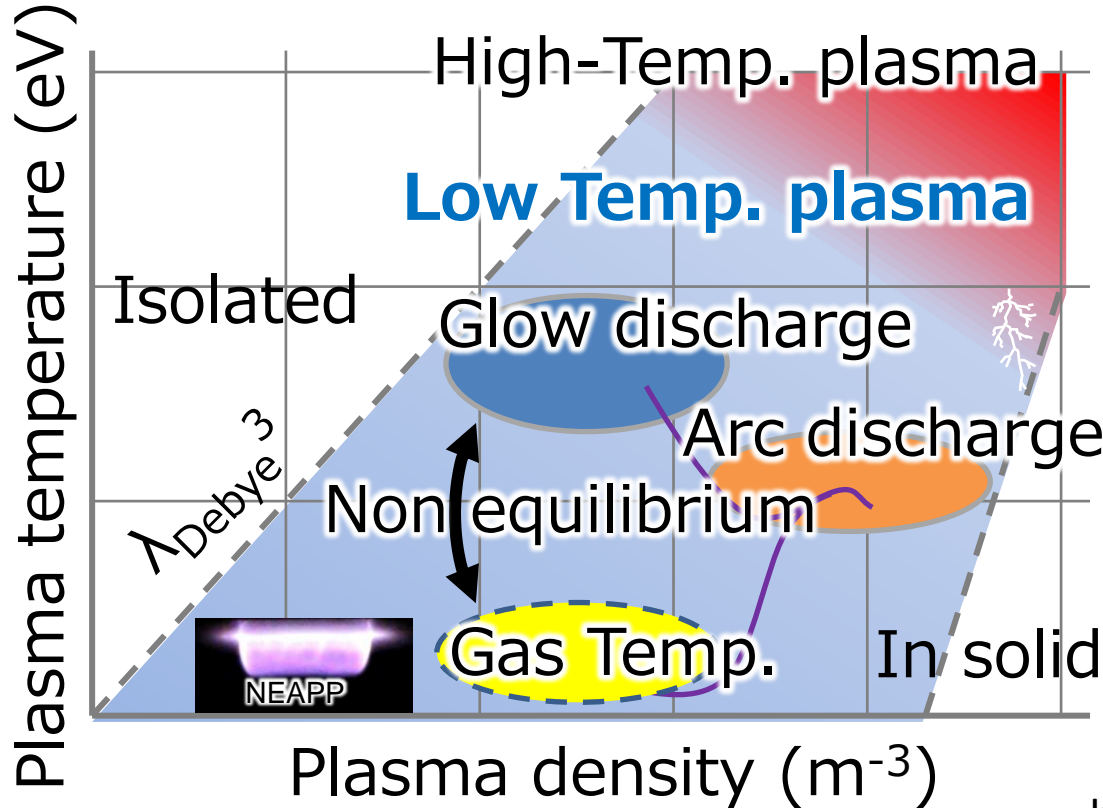
Kenji Ishikawa^a , Keigo Takeda^b, Shinji Yoshimura^{a,c,d} , Takashi Kondo^a, Hiromasa Tanaka^a , Shinya Toyokuni^{a,e} , Kae Nakamura^{a,f} , Hiroaki Kajiyama^{a,f} , Masaaki Mizuno^g and Masaru Hori^a

^aCenter for Low-temperature Plasma Sciences, Nagoya University, Nagoya, Japan; ^bDepartment of Electrical and Electronic

Free Radical Research (2023), 57 (3) Pages 239-270

DOI: 10.1080/10715762.2023.2230351

Plasmas occurring in nature



Solar wind



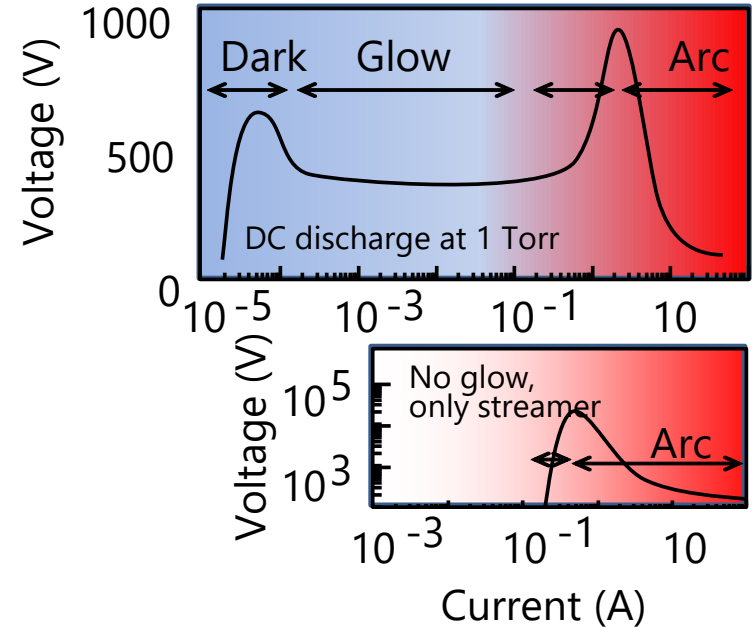
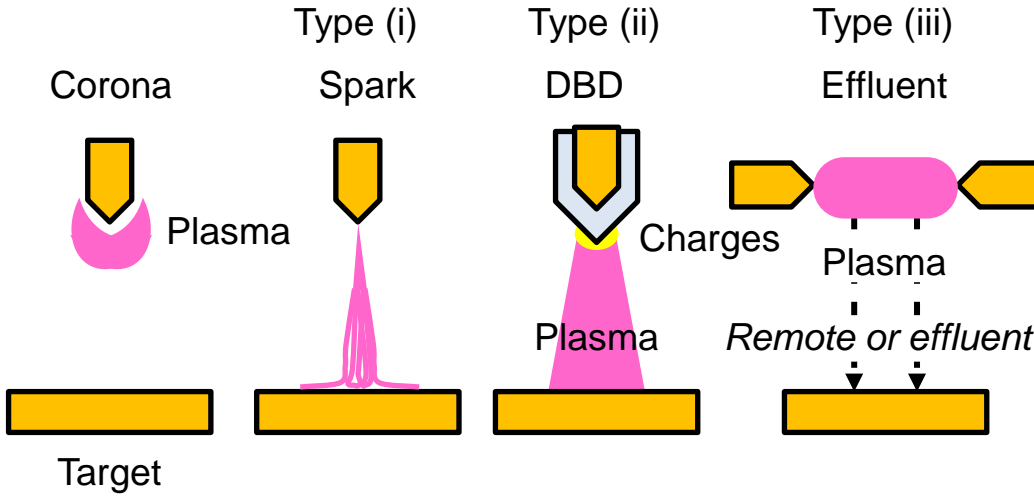
Aurora borealis

<https://lamp-mission.sites.uiowa.edu/>
Nagoya University ISEE

Plasma sources & mode transition



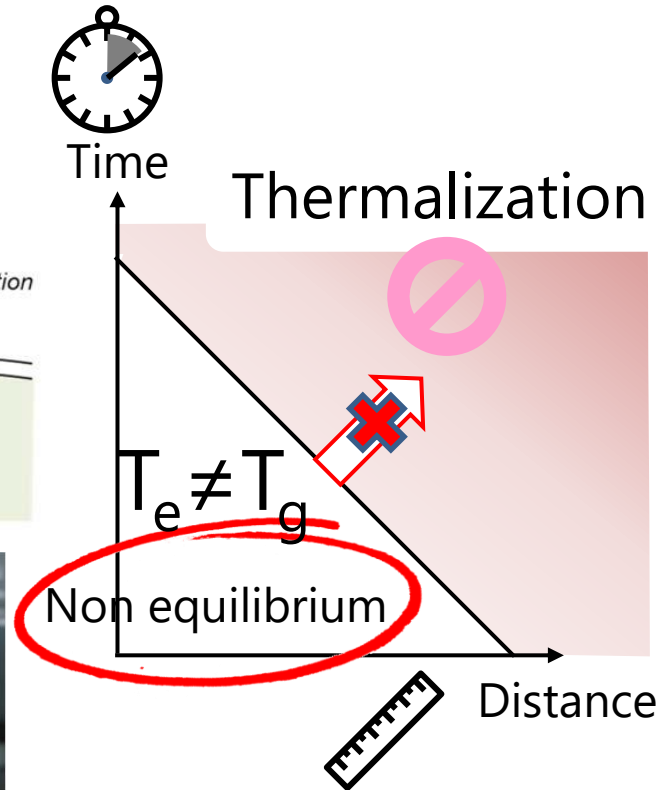
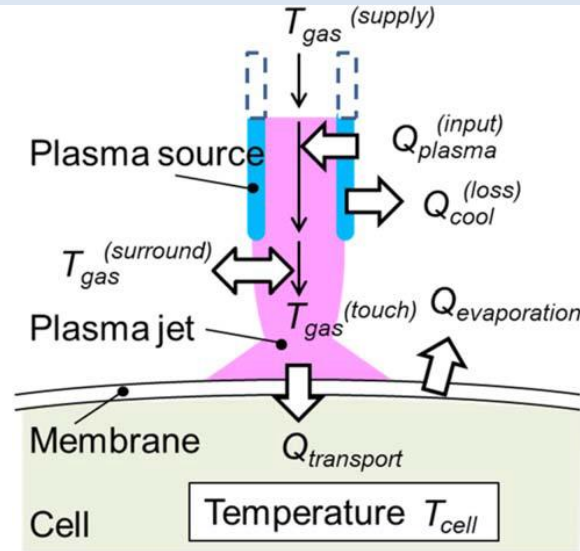
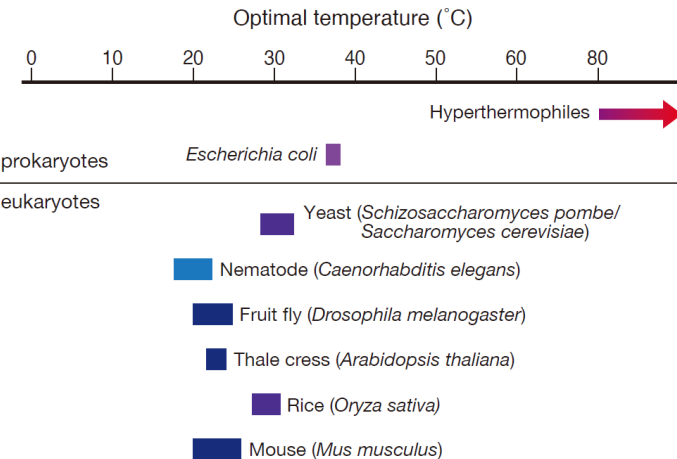
Joule heating in the discharge path of high electrical currents.



Optimal temperature range is narrow

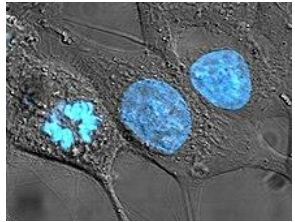
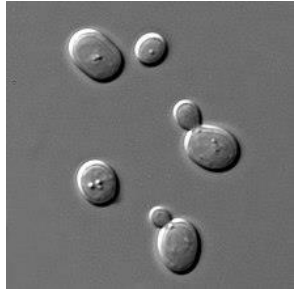
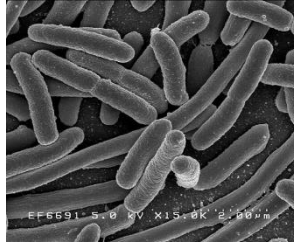


A balance between source input and consumption-loss of energy determines the resulting temperature of the living organism, which is surrounded by the environment.

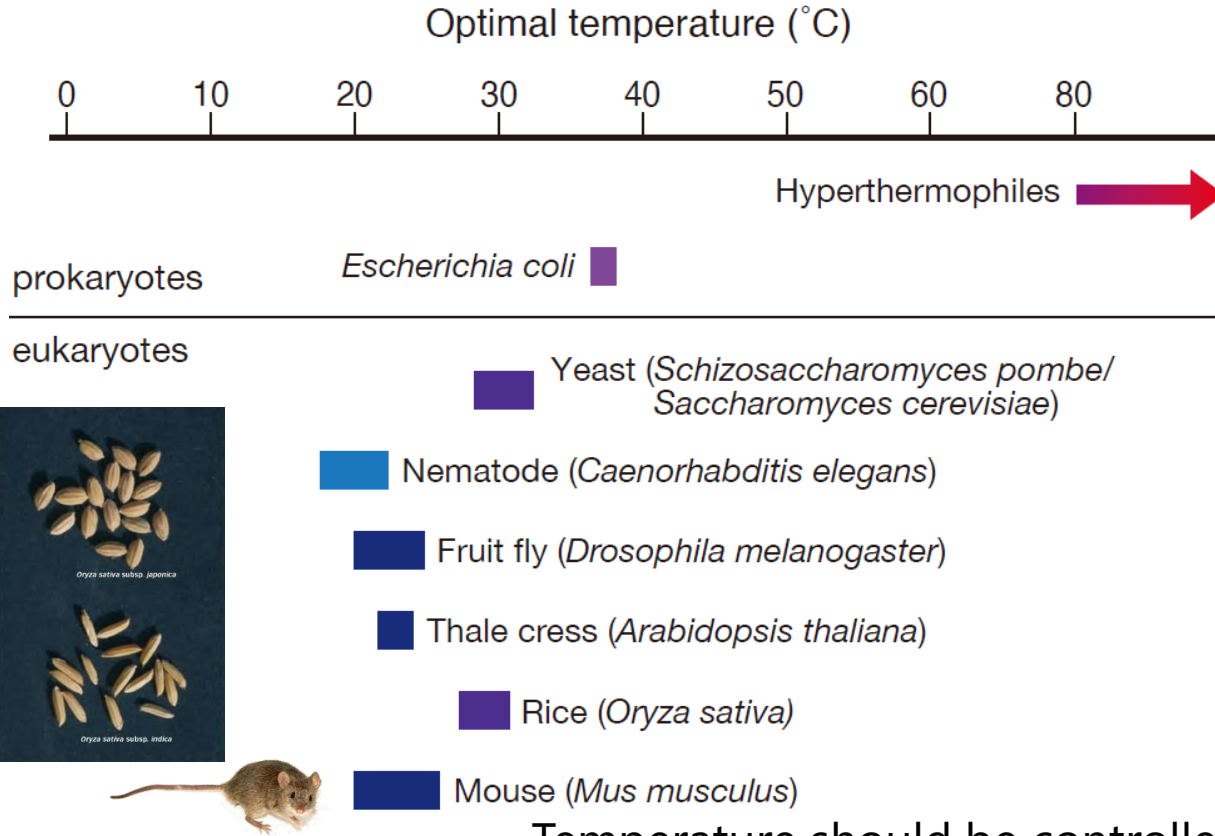


Temperature should be controlled for biology

Optimal temperature range is narrow



Wikipedia



Temperature should be controlled for biology

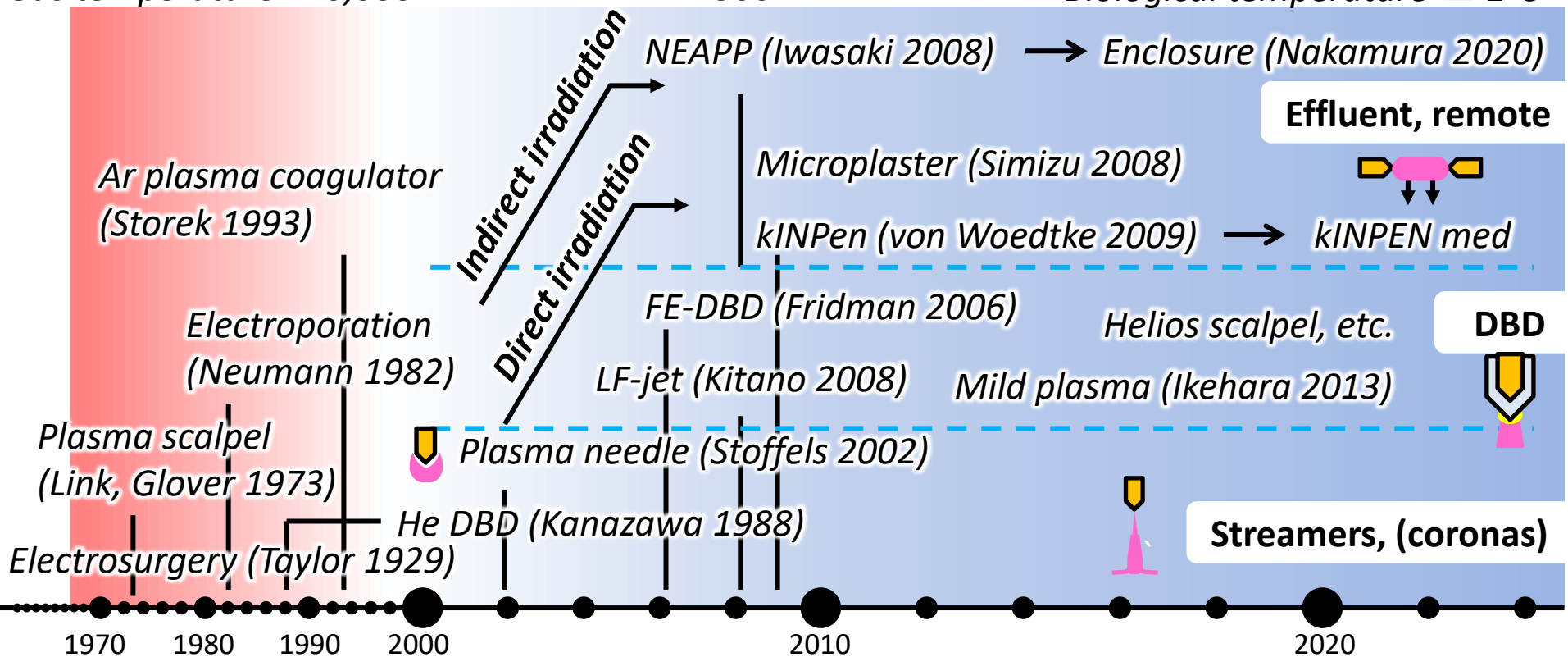
History of direct & indirect irradiations



Gas temperature >10,000K

~300K

≡ Biological temperature $\pm 1^\circ\text{C}$

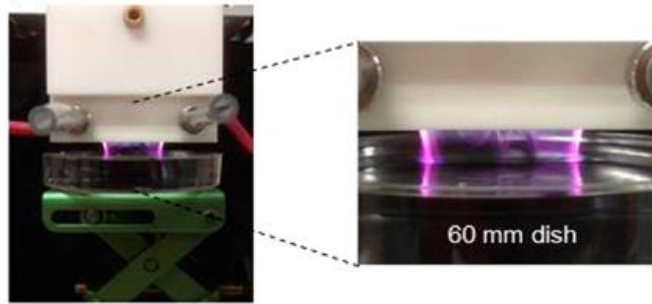


Indirect - PAL: Plasma-activated solutions



Plasma-activated Lactec : PAL

➤ Antitumor effect on PAL

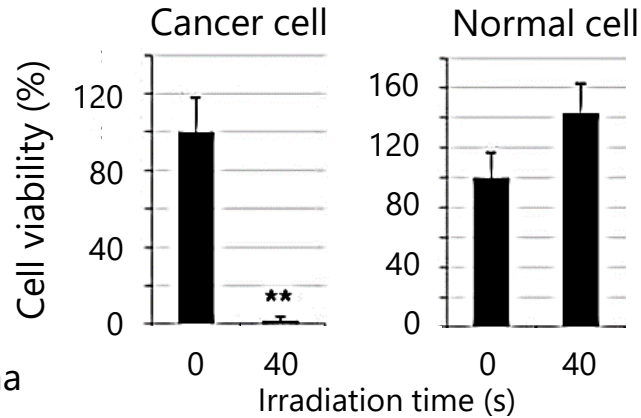


Ringer's lactated solution (Lactec) + plasma

- NaCl
- KCl
- $\text{CaCl}_2 \cdot 2\text{H}_2\text{O}$
- Lactate Na

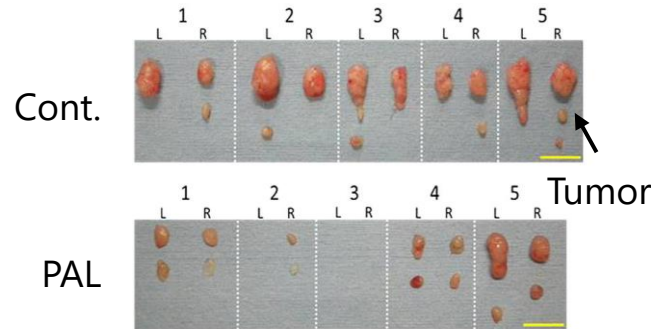


intravenous infusion



Cont PAM

In vitro and In vivo

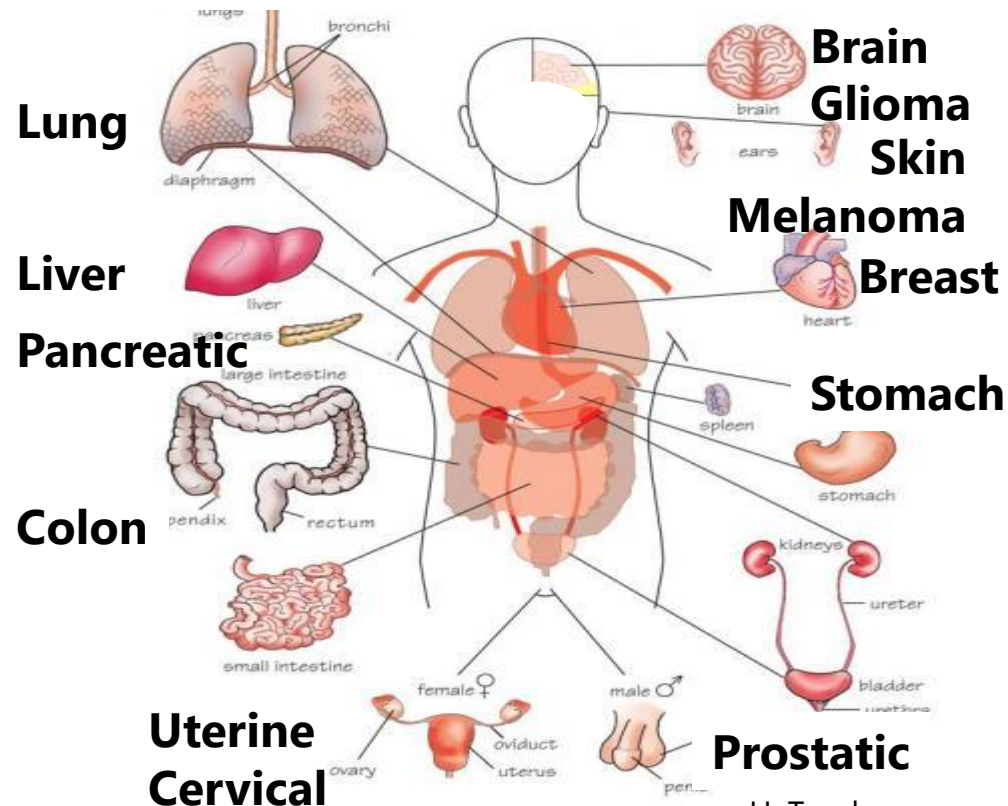


Plasma medical innovation – cancer therapy



Plasma cancer treatments

ODY



H. Tanaka

- Preferential killing of tumor cells



- Issues
- Clarification of **plasma diagnostics** and the antitumor mechanism of Plasma-activated liquids

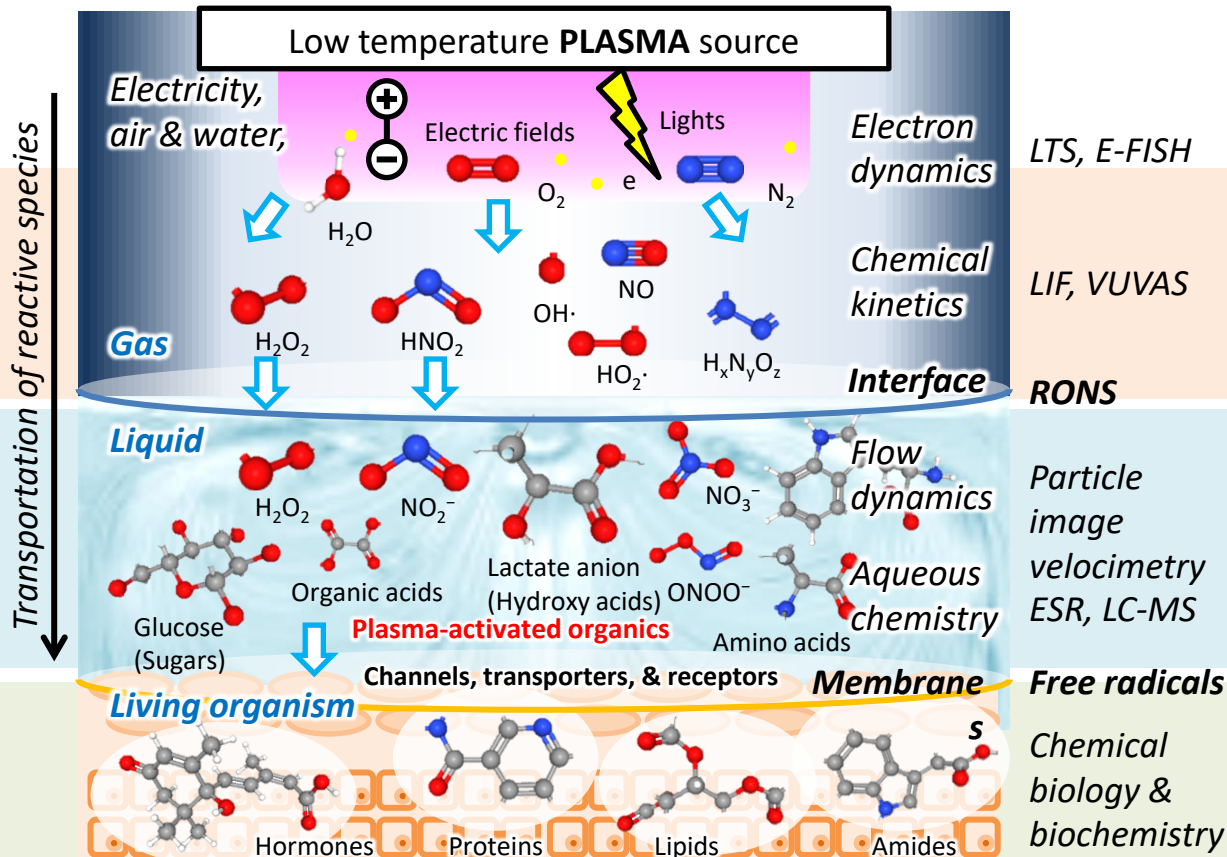
Hierarchical complex systems -diagnostics



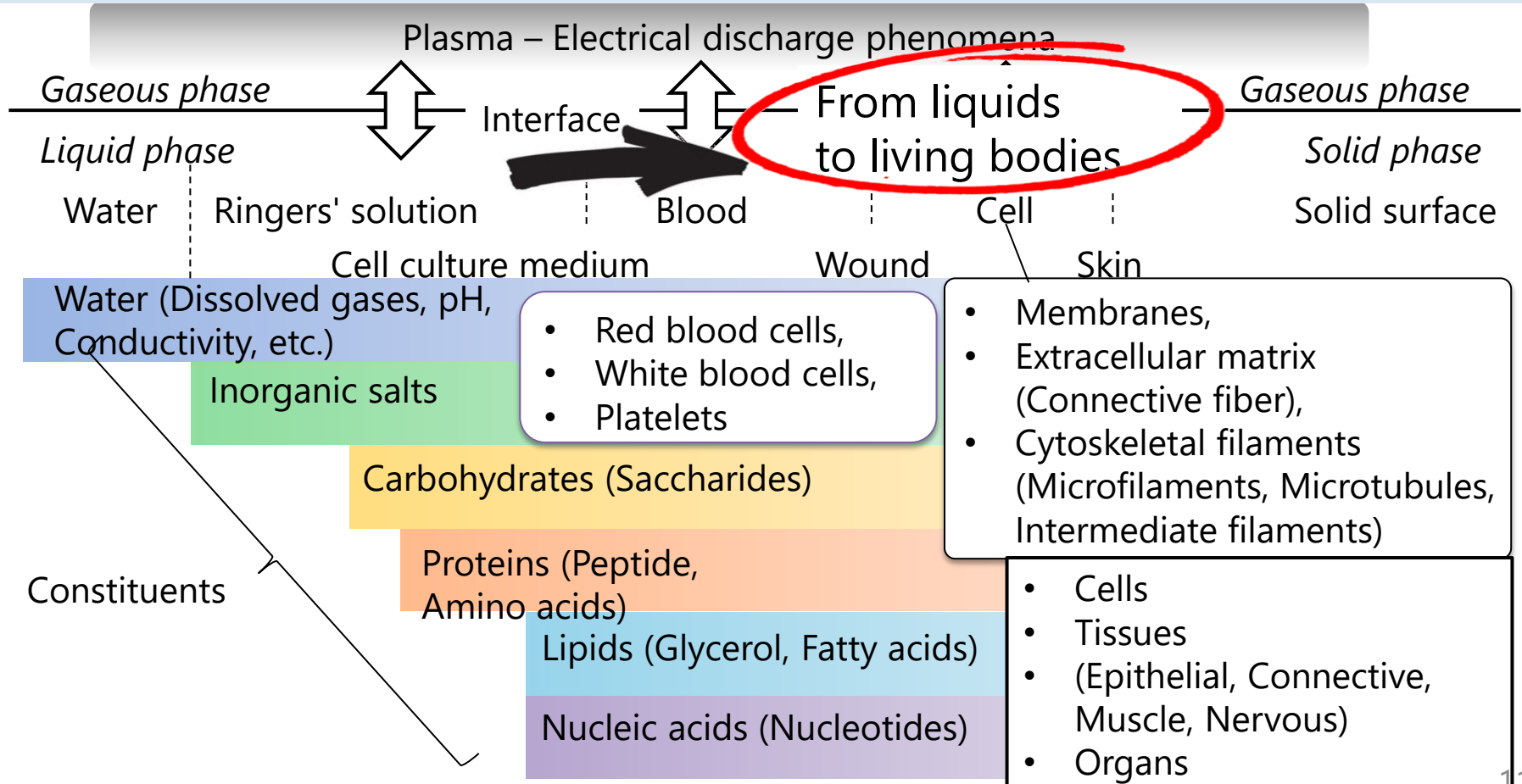
Laser diagnostics



Electron spin resonance (ESR)



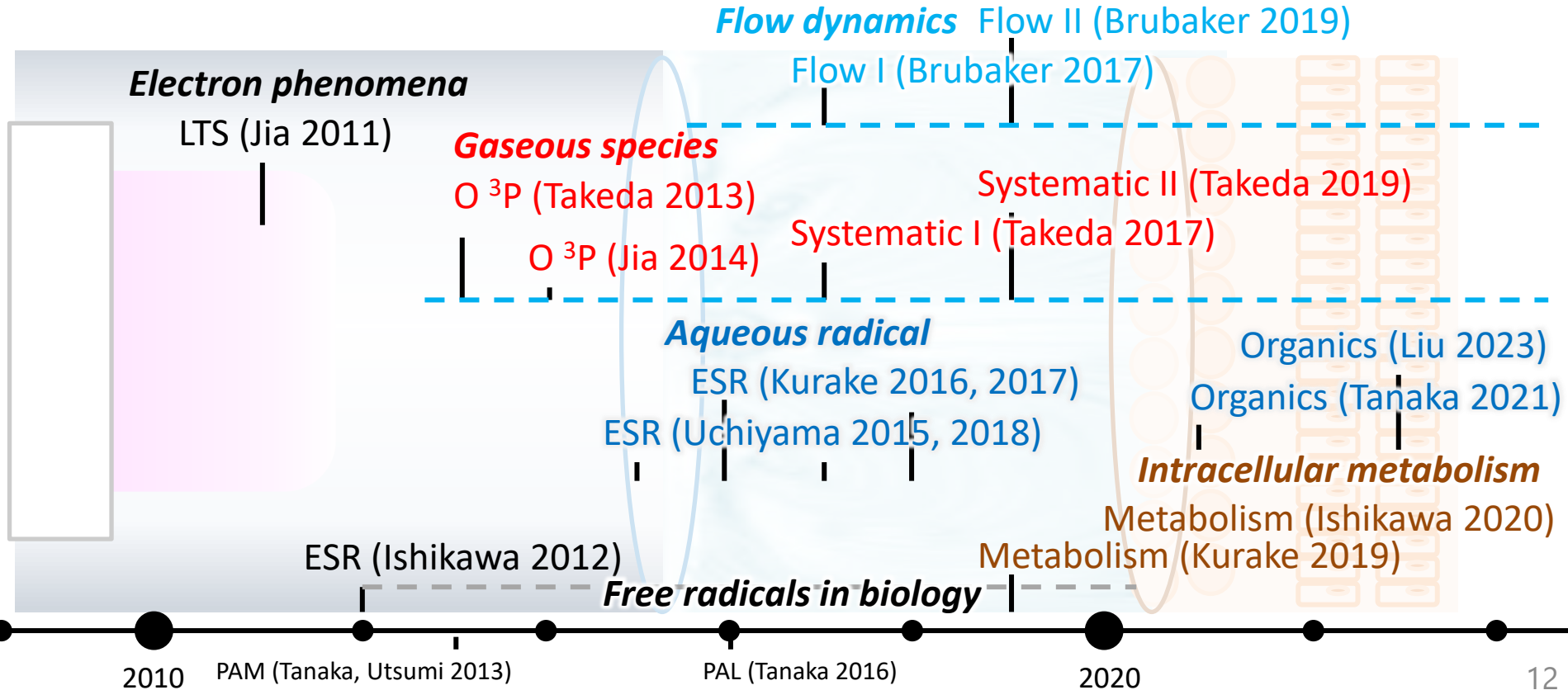
Effects of plasma-liquid interactions



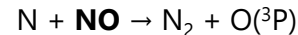
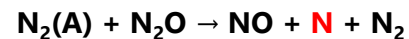
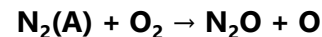
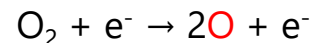
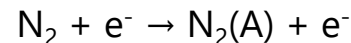
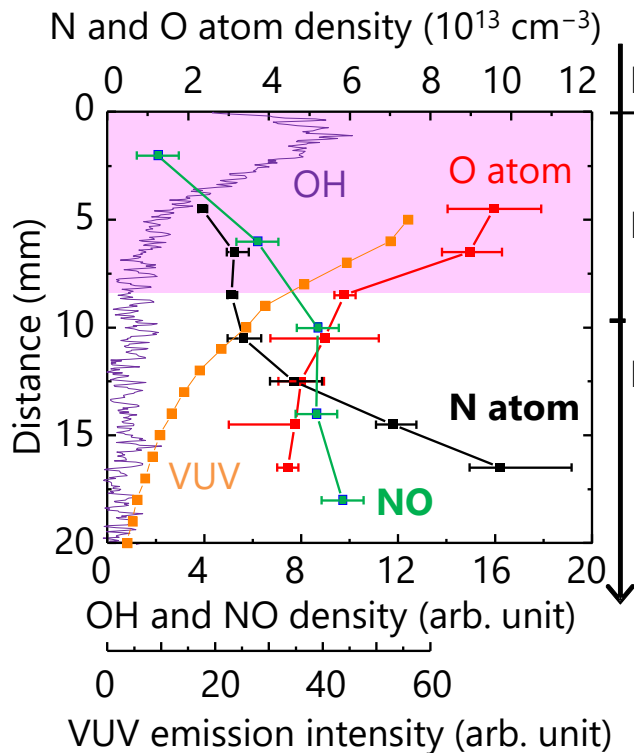
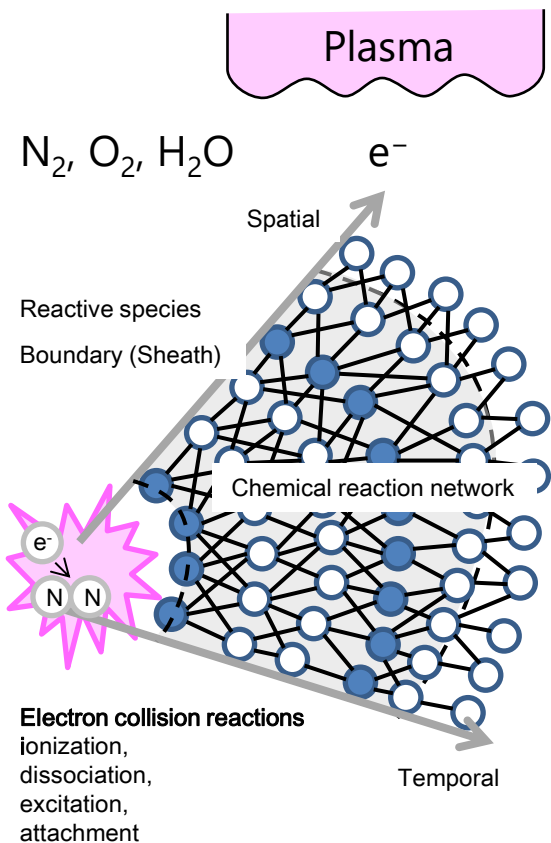
History of diagnostics



Plasma source ↔ *Gaseous chemistry* ↔ *Aqueous chemistry* ↔ *Plasma-biological interaction*



Gaseous - nonequilibrium physicochemical reaction field



Laser diagnostics

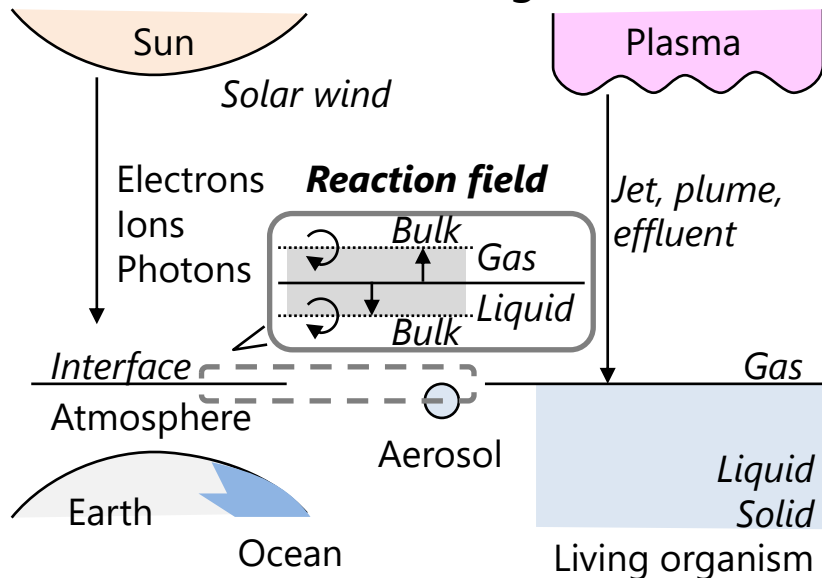


K. Takeda, *J. Phys. D* **50**, 195202 (2017).

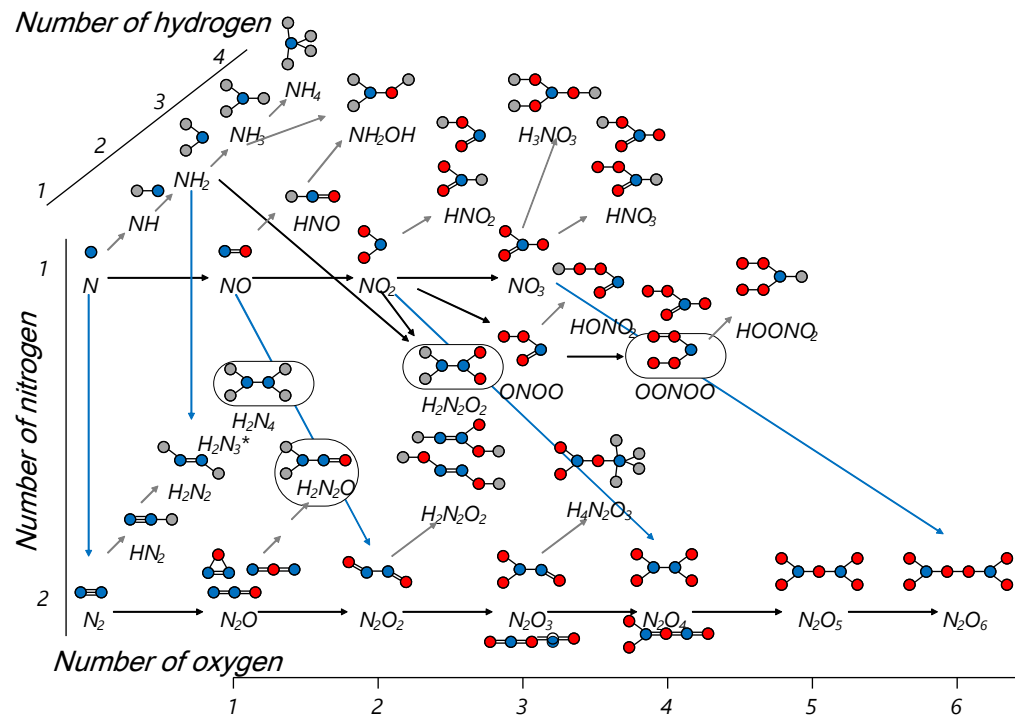
Chemical network - Artificial and natural systems



The **plasma-liquid interactions** associated with a plasma discharge are similar to those occurring in the Sun



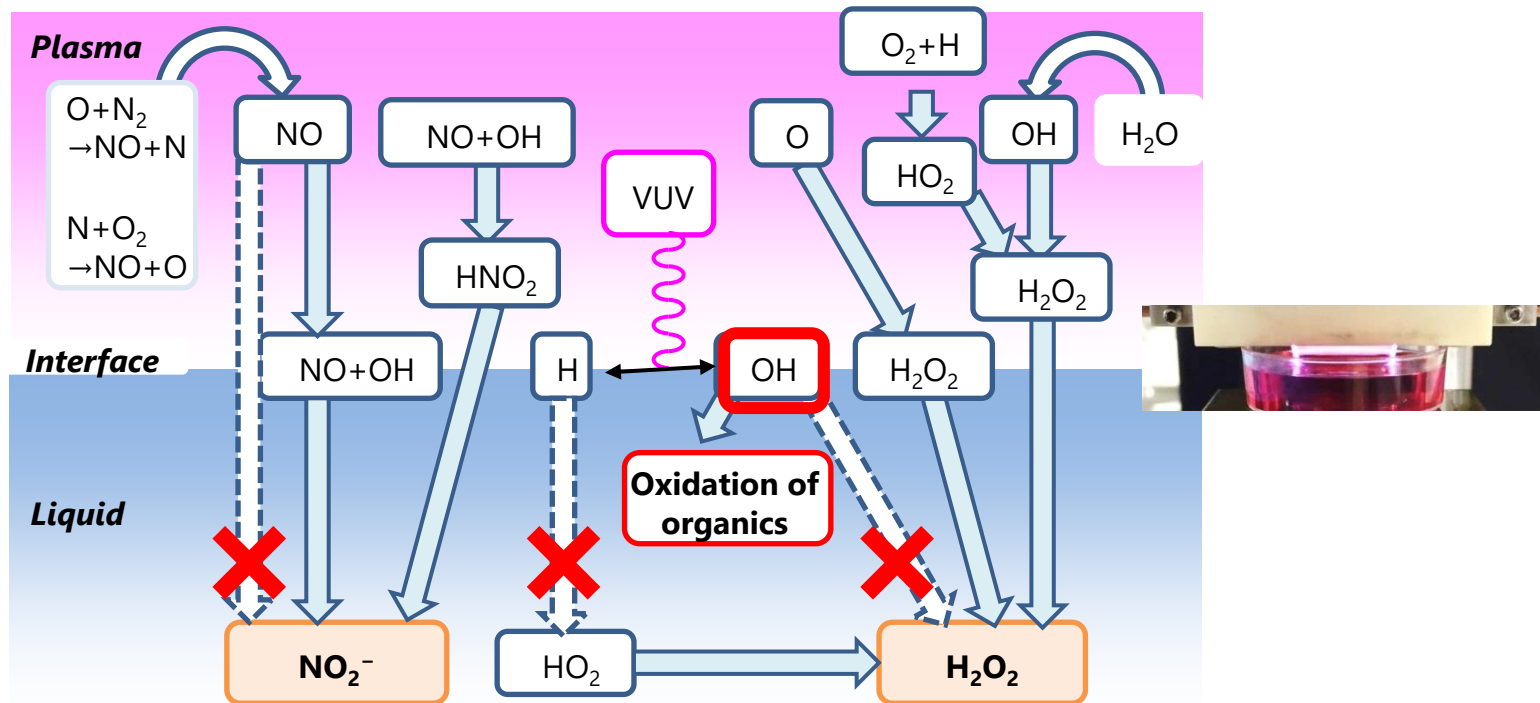
Chemical network of nitrogen derivatives



Aqueous - nonequilibrium physicochemical reaction field



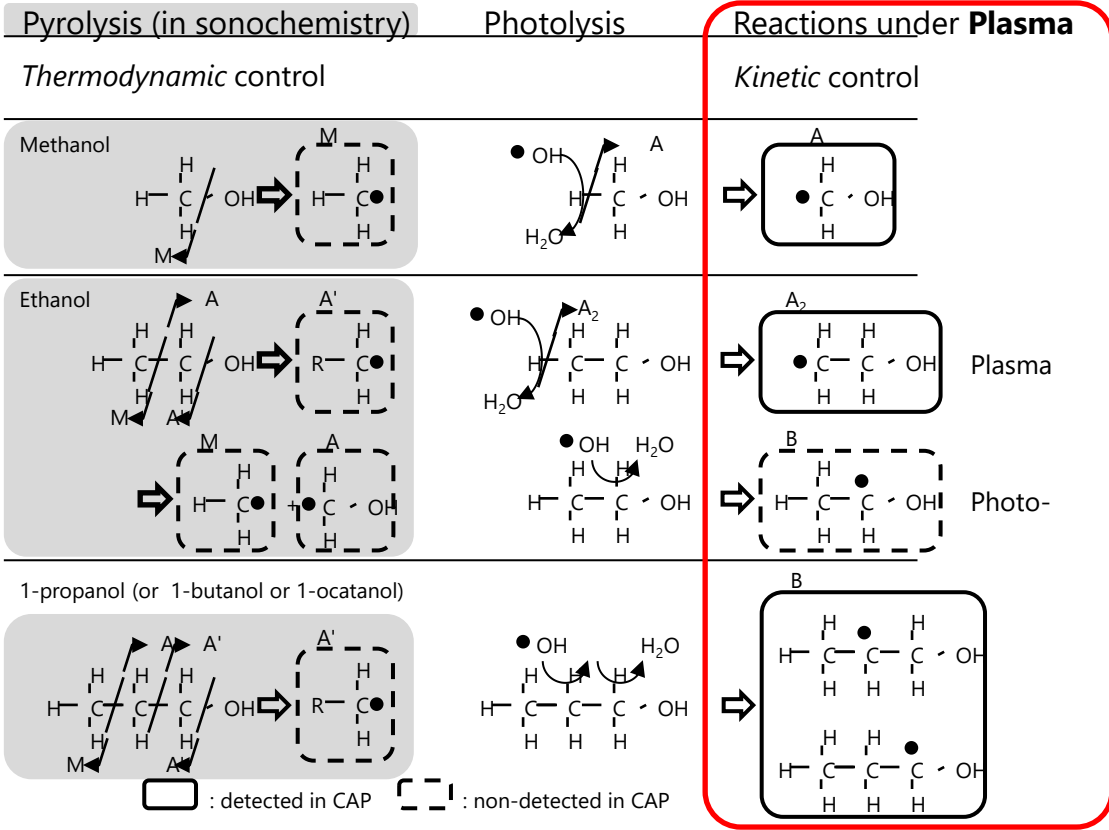
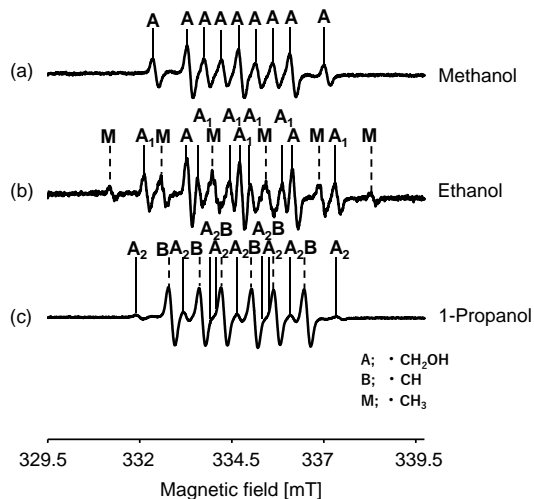
- Nitrous oxides dissolve and OH radical oxidizes organics



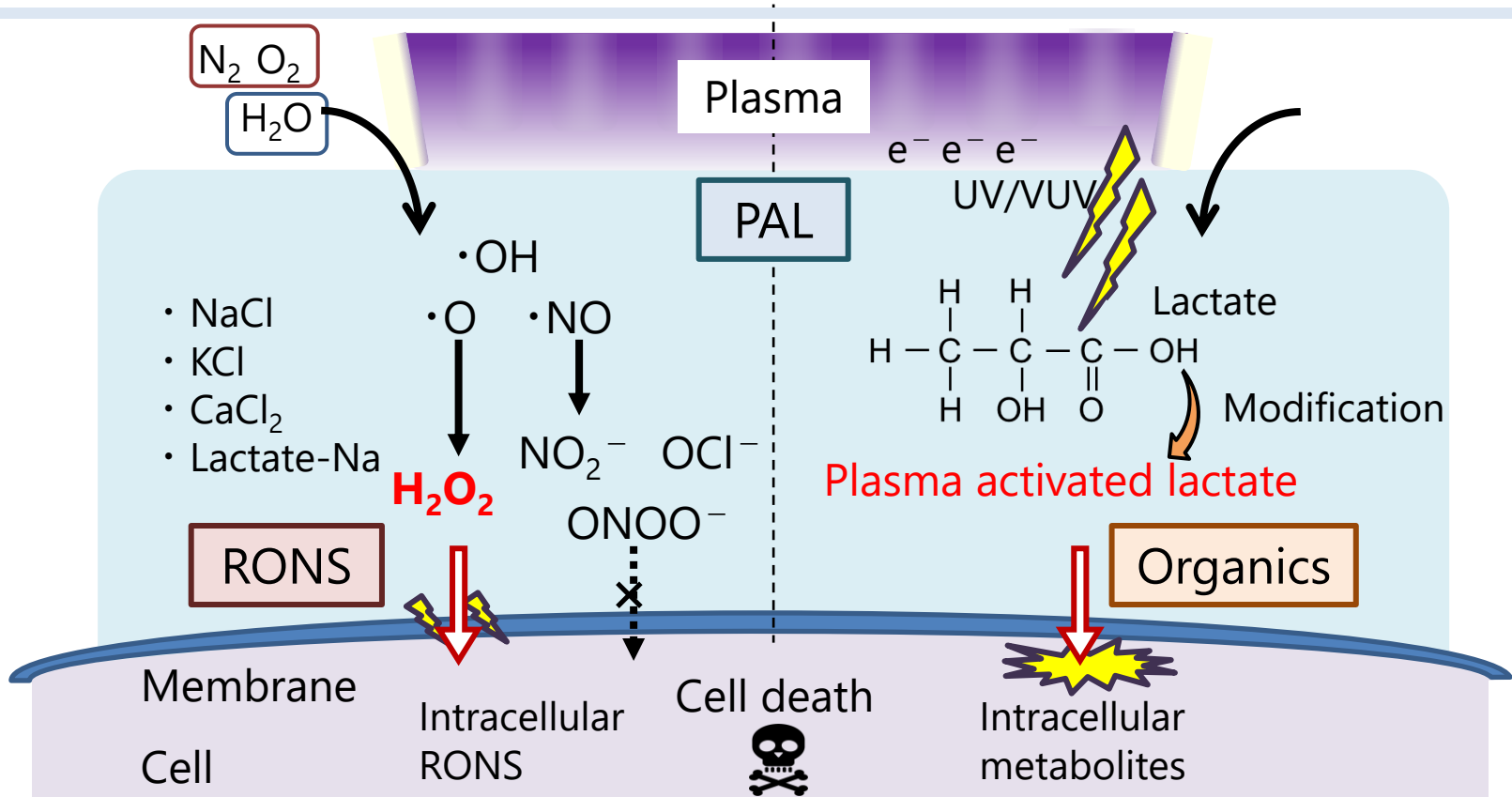
OH radical mediated reactions



Aqueous radical detection by electron spin resonance (ESR)

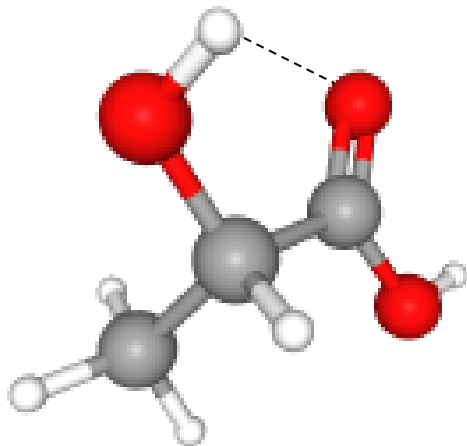


Inorganic and organic antitumor agents



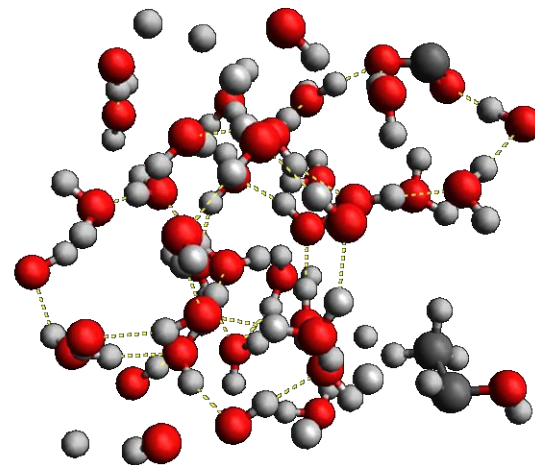
Aqueous reaction lactic acid and OH

- Conformation



Solvated water molecules

Acidification in water
(Alberty-Legendre transform
in Thermodynamics)



Alcohol (OH)/Aldehyde(C=O)/Carboxylic acid (COOH)

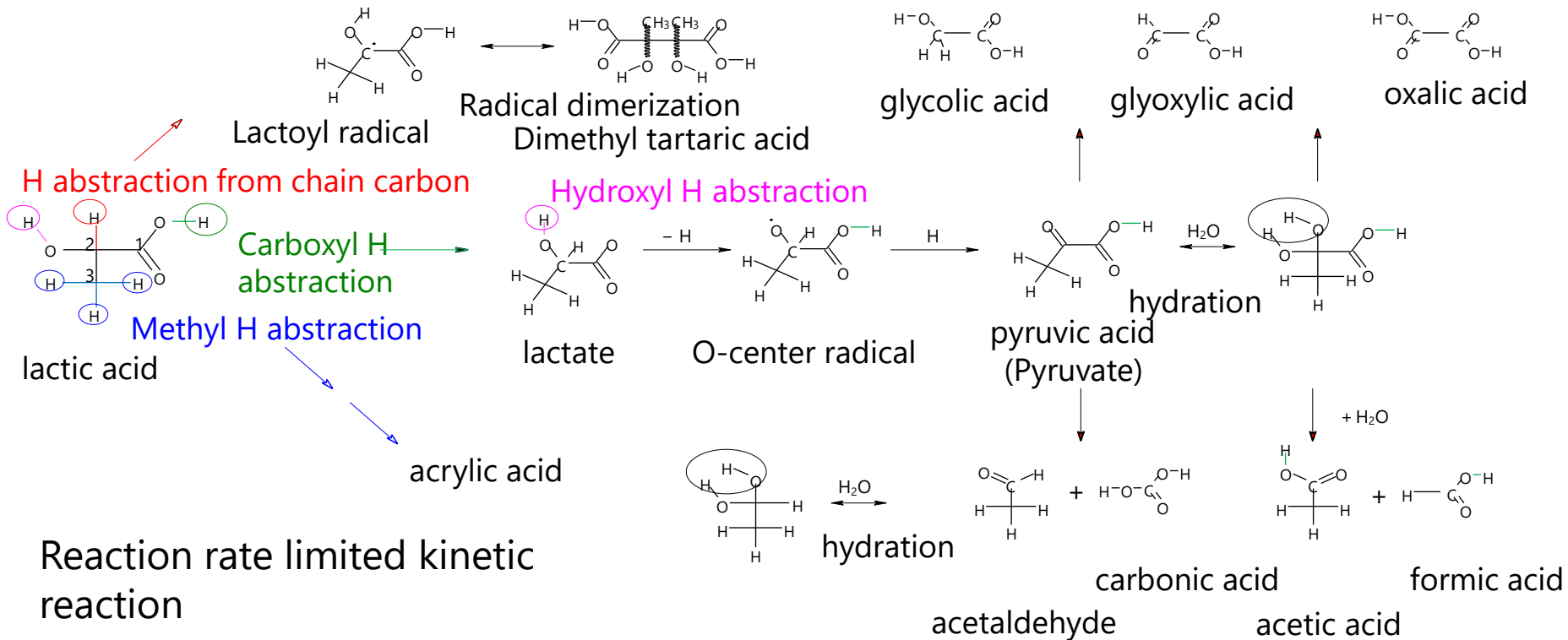
$C_3H_6O_3 \rightarrow C_{>3}$ synthesis, C_3 modification, $C_{<3}$ decomposition

Organic chemistry, Physical chemistry, Photochemistry, Electrochemistry,
Organic electrochemistry

Plasma-induced aqueous chemistry



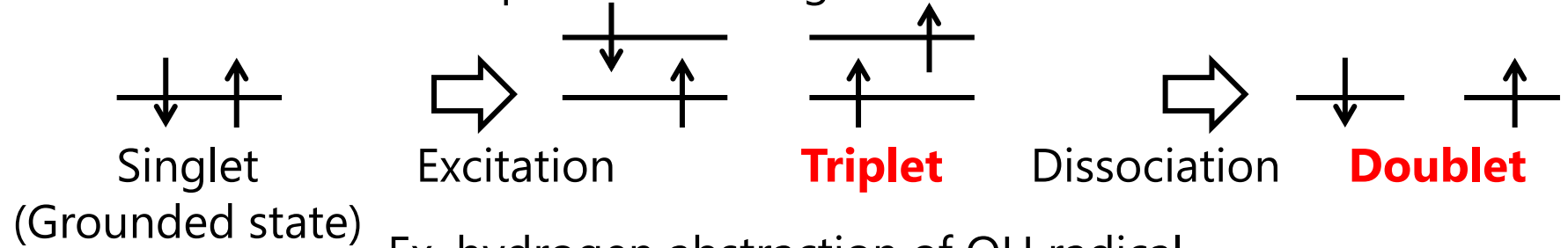
- Hydrogen abstraction



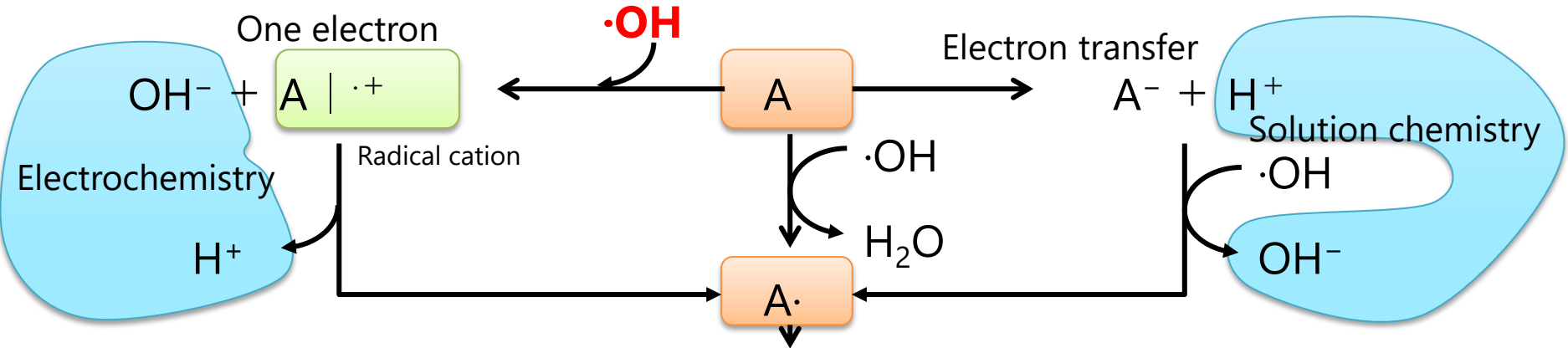
Chemical aspect - Radical reactions



Generation of reactive species involving radicals

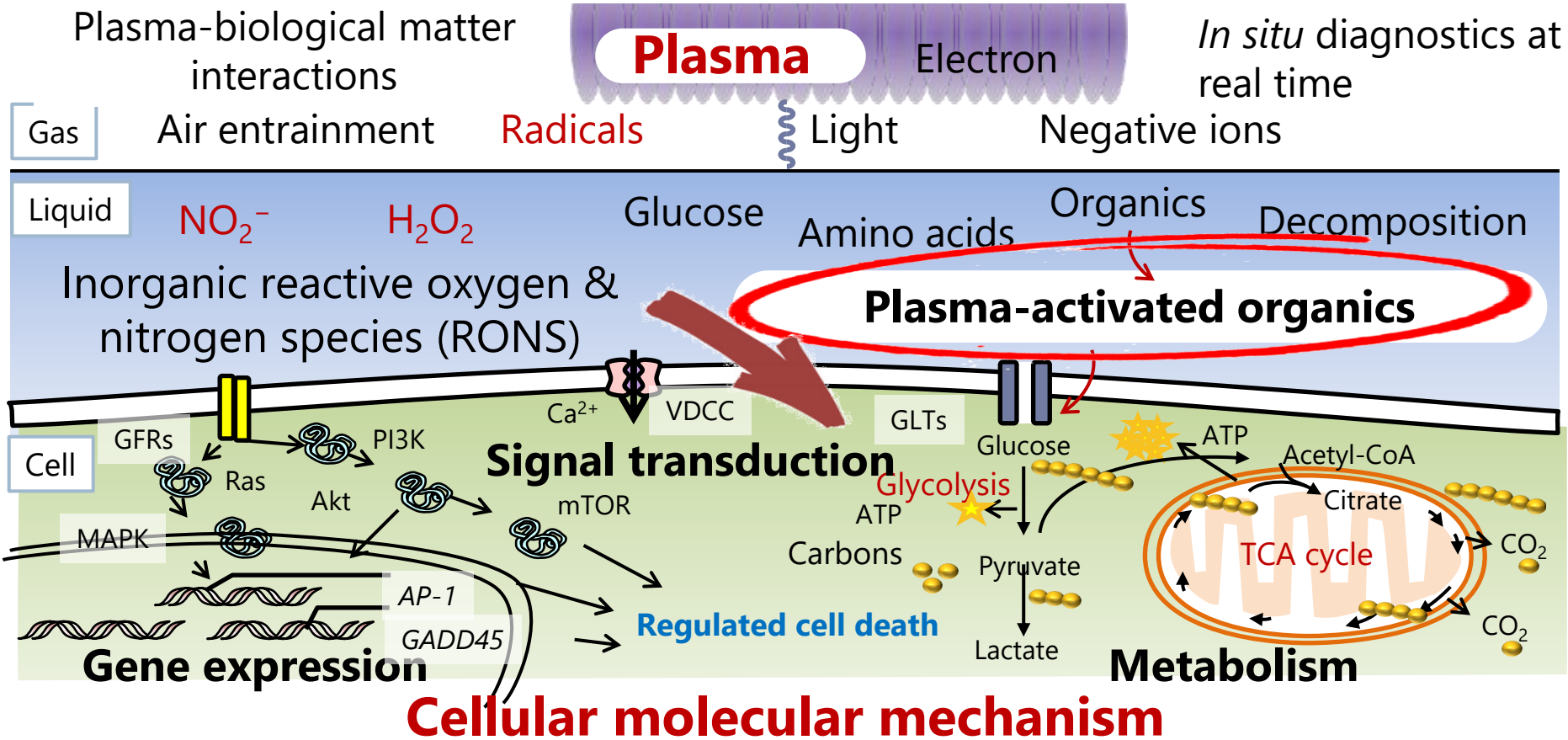


Ex. hydrogen abstraction of OH radical



Rich aqueous chemistry in plasma induced reactions.
Physical actions Chemical reactions. (PACR)

Induction of cellular responses



Cellular molecular mechanism

How plasma induced intracellular reactions ?

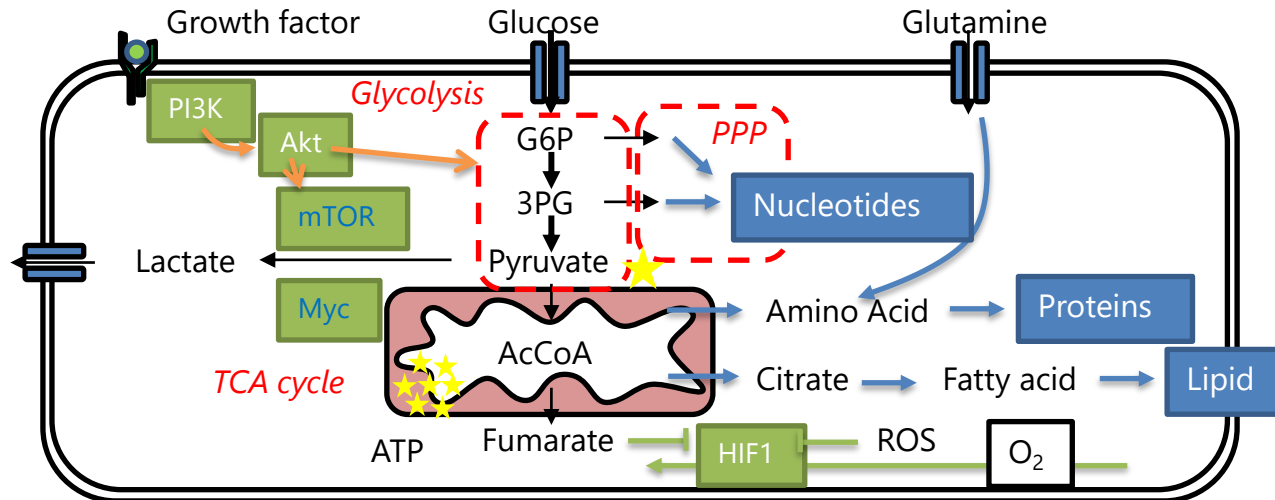
Intercellular metabolism

- Metabolic reprogramming: Nutrient acquisition and **metabolism** of malignant cells (**Aerobic glycolysis**, "Warburg effect")

– **Bio-energetic** (Glucose oxidation, ATP, etc.)

– **Bio-synthetic** (Amino acids, Lipids, Proteins as biomass)

– **Redox balance** (NADPH, GSH/GSSG, etc.)



Differences in metabolites



Archives of Biochemistry and Biophysics

Volume 688, 30 July 2020, 108414



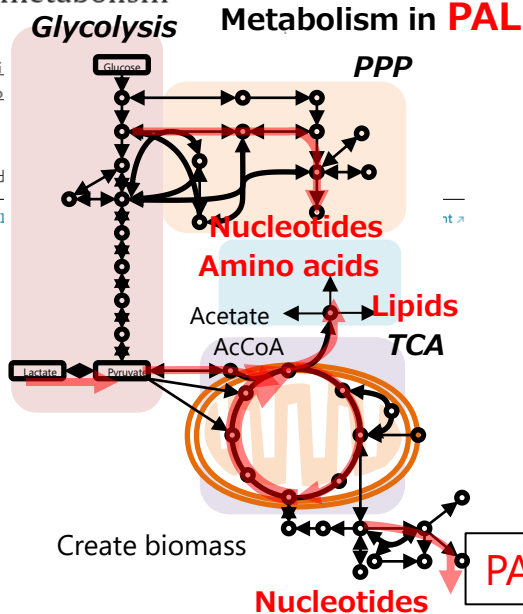
Non-thermal plasma-activated lactate solution kills U251SP glioblastoma cells in an innate reductive manner with altered metabolism

Kenji Ishikawa,^a
Shinya Toyokuni,
Masaaki Mizuno

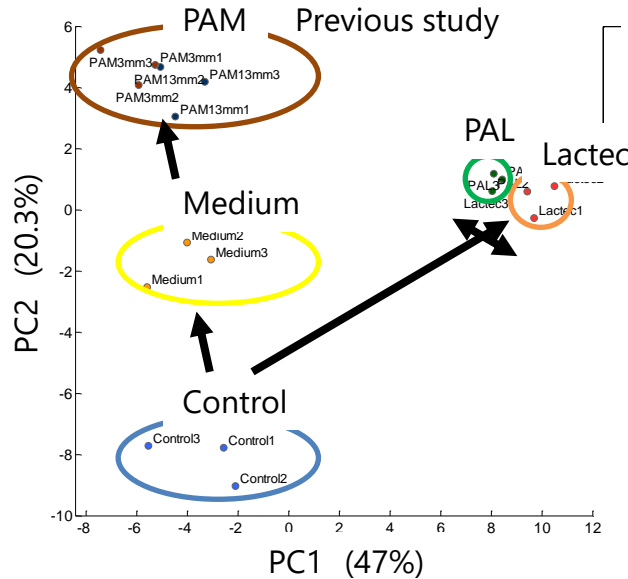
Show more

+ Add to Mend

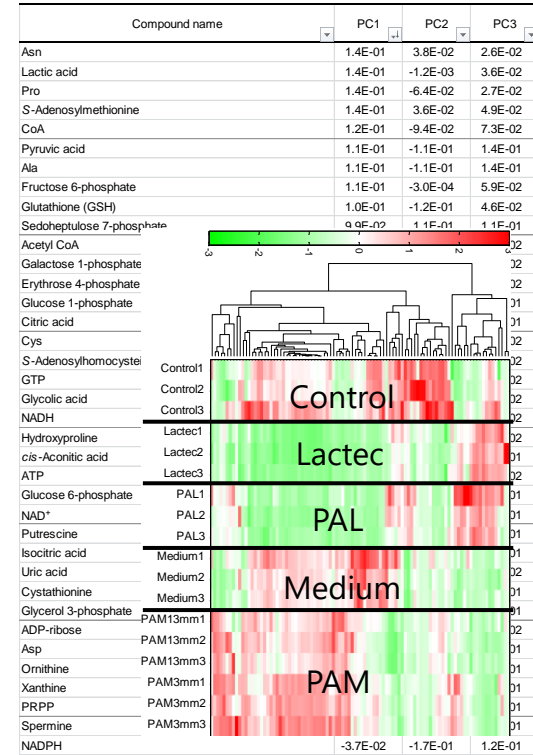
<https://doi.org/10.1>



Principle component analysis



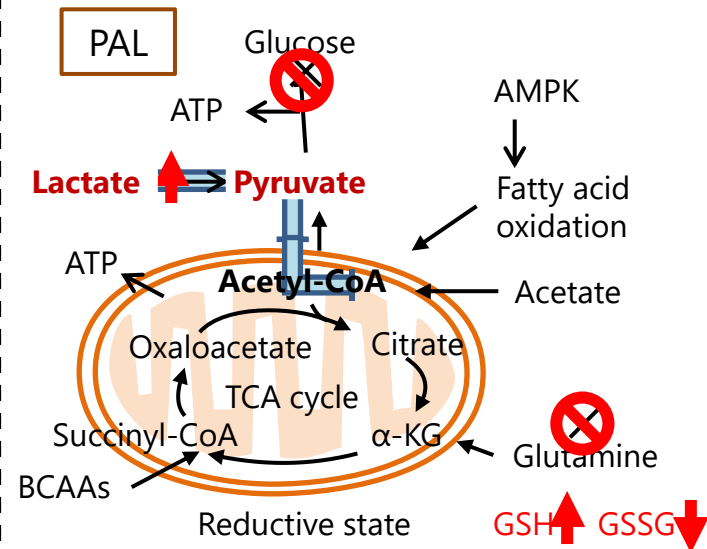
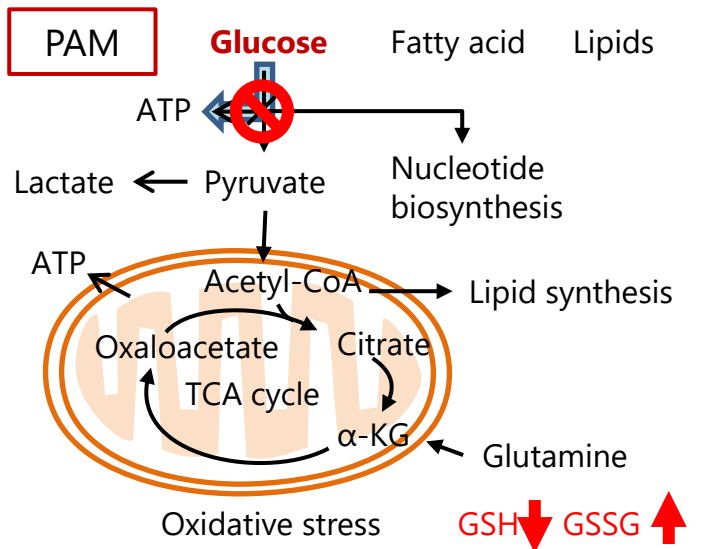
PAL modified the metabolic profiles





Key results in metabolism

	Growth	Apoptosis Caspase	Energy	Sugar	Biomass Amino acid	Fat	Electrons ROS
DMEM	↑	—	—	Catabolism	—	—	—
PAM	↓	↑	Glycolysis↓	↓	—	—	Ox
Lactec	?	—	—	Anabolism	—	—	Red
PAL	↓	↑	TCA→	↓	↓	↓	Red



NO in plasma-induced ferroptosis



Redox Biology
Volume 43, July 2021, 101989



Research Paper

Lysosomal nitric oxide determines transition from autophagy to ferroptosis after exposure to plasma-activated Ringer's lactate

Li Jiang^{a,1}, Hao Zheng^{a,1}, Qinying Lyu^a, Shotaro Hayashi^{a,b}, Kotaro Sato^a, Yoshitaka Sekido^c, Kae Nakamura^{b,d}, Hiromasa Tanaka^{d,e}, Kenji Ishikawa^d, Hiroaki Kajiyama^{b,d}, Masaaki Mizuno^e, Masaru Hori^d, Shinya Toyokuni^{a,d,f}

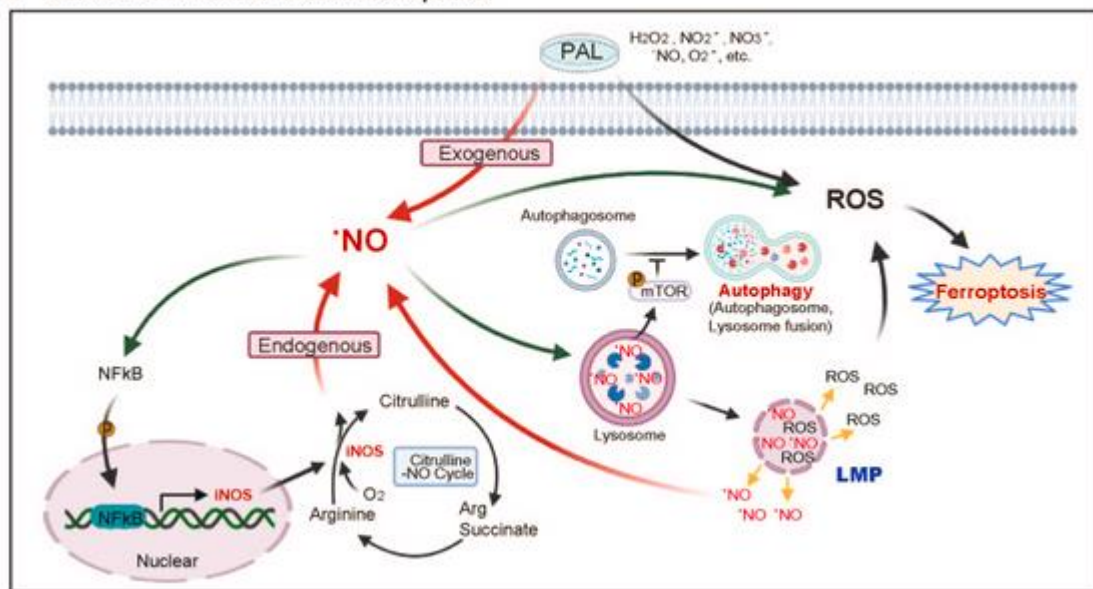
Show more

+ Add to Mendeley Share Cite

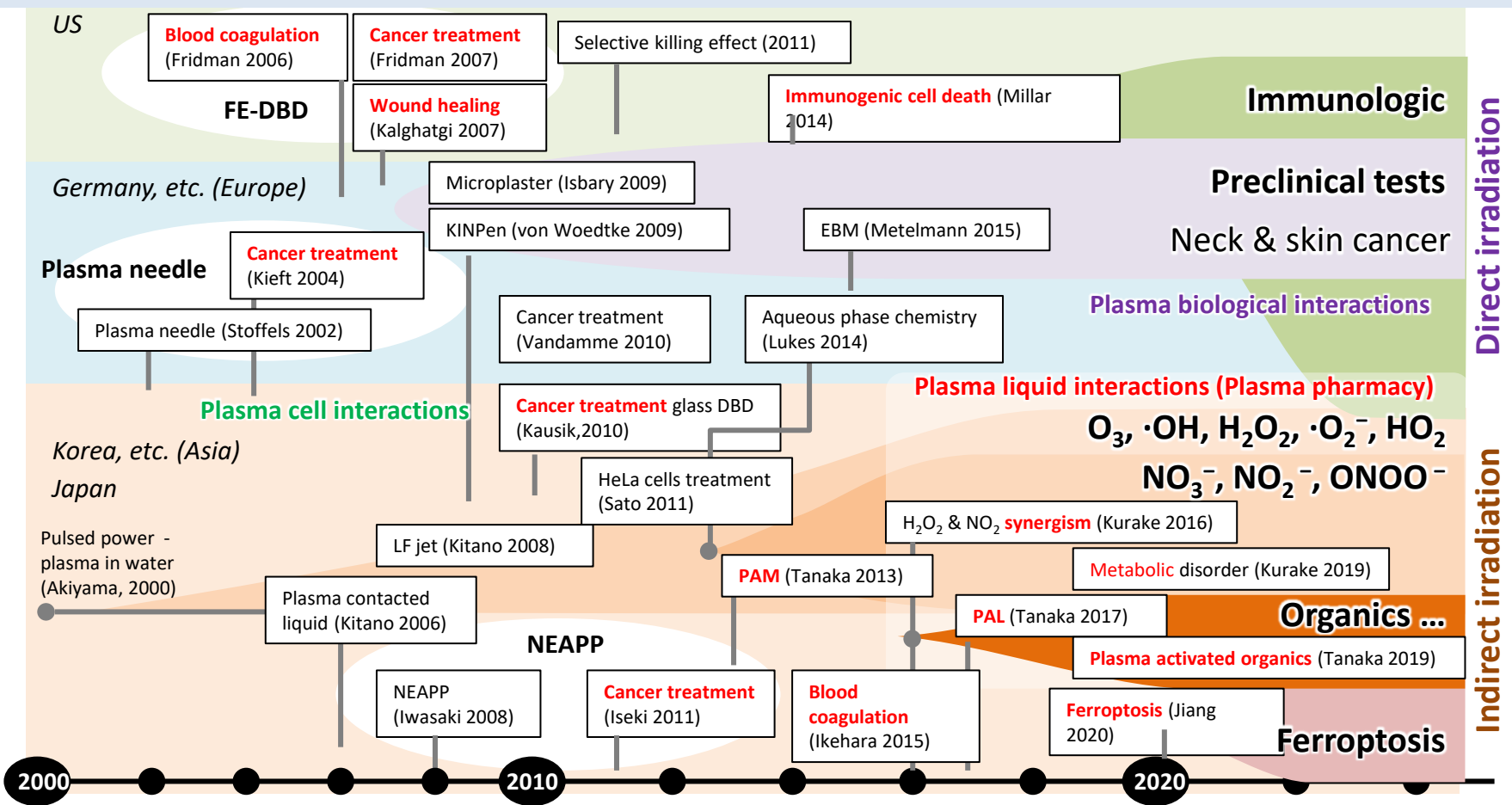
<https://doi.org/10.1016/j.redox.2021.101989>

Get rights and contents

A The role of NO in PAL-induced ferroptosis



Plasma-liquid & living organism interactions

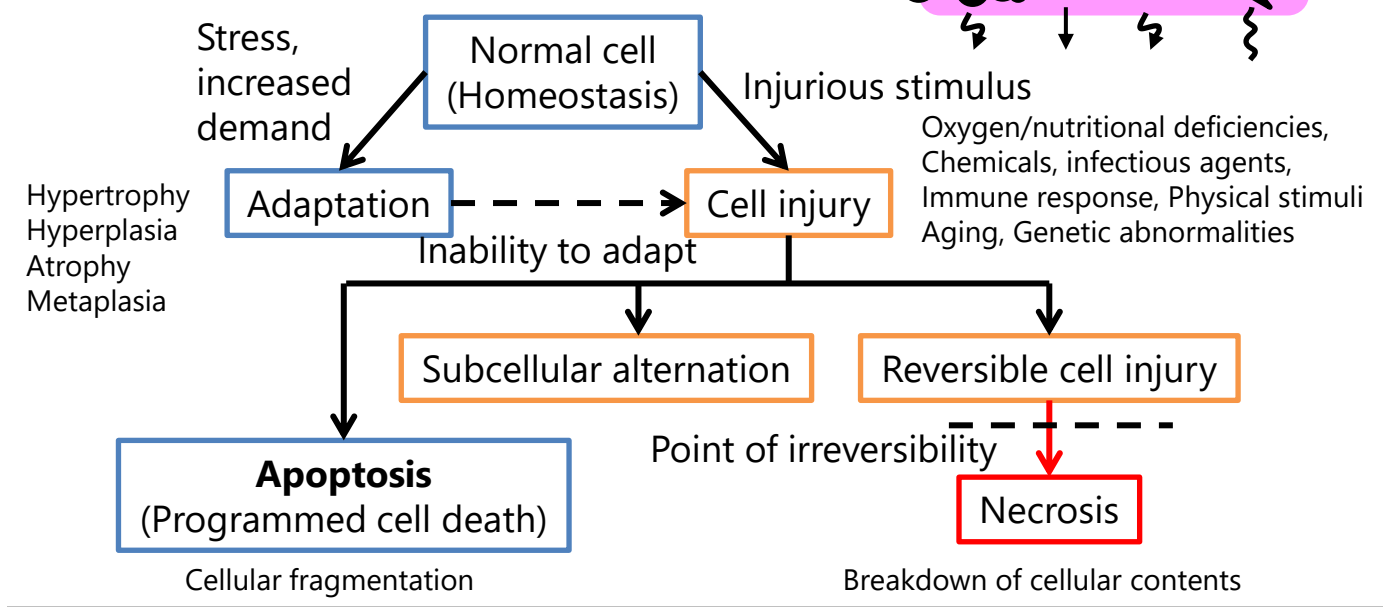


Pathology – plasma pharmacy



Plasma stress

Physics (Collision) Plasma Chemistry (Reactions)

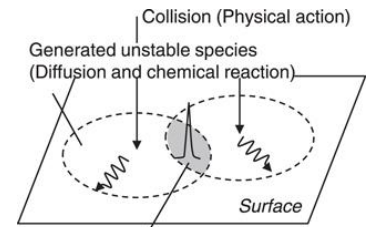


Healthy Physiological homeostasis (Plasticity) Irreversible disorder (Infection, dysfunction) Disease

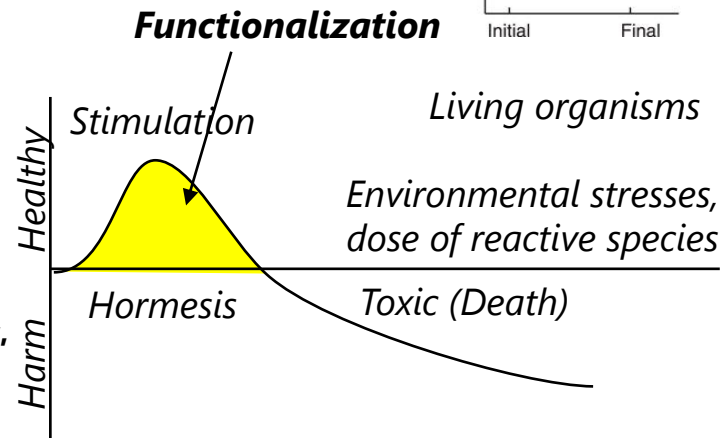
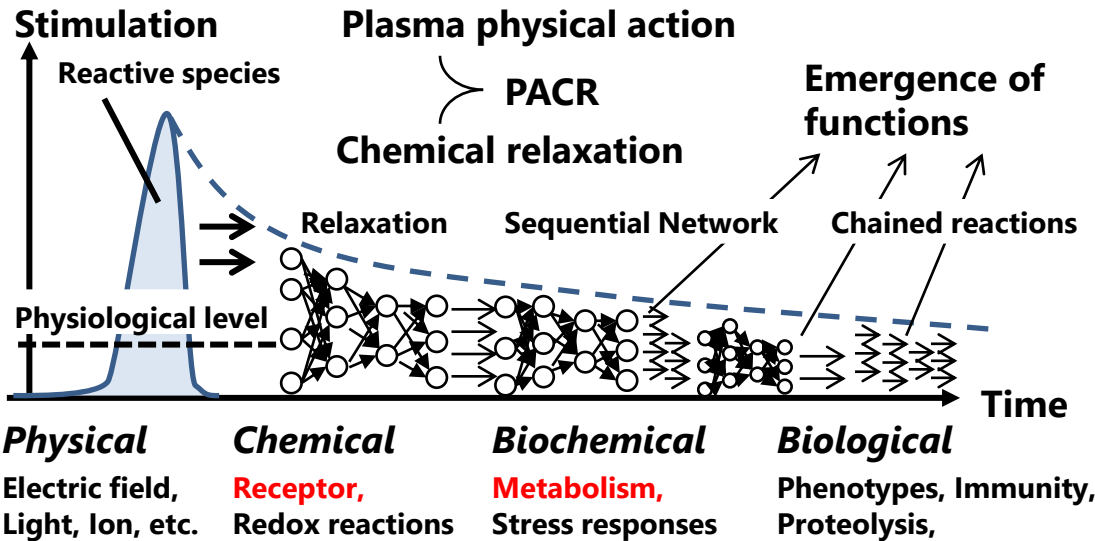
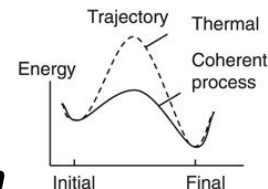
Plasma triggers nonequilibrium reactions



- The relaxation of the initiating physical impulses that exceed a physiological stress level propagates this network so act as stimulations. Thus, the plasma-induced reactions are both dynamic and reversible. These subsequently react with other species and generate various products as a consequence of **physical actions and chemical relaxation** (PACR).



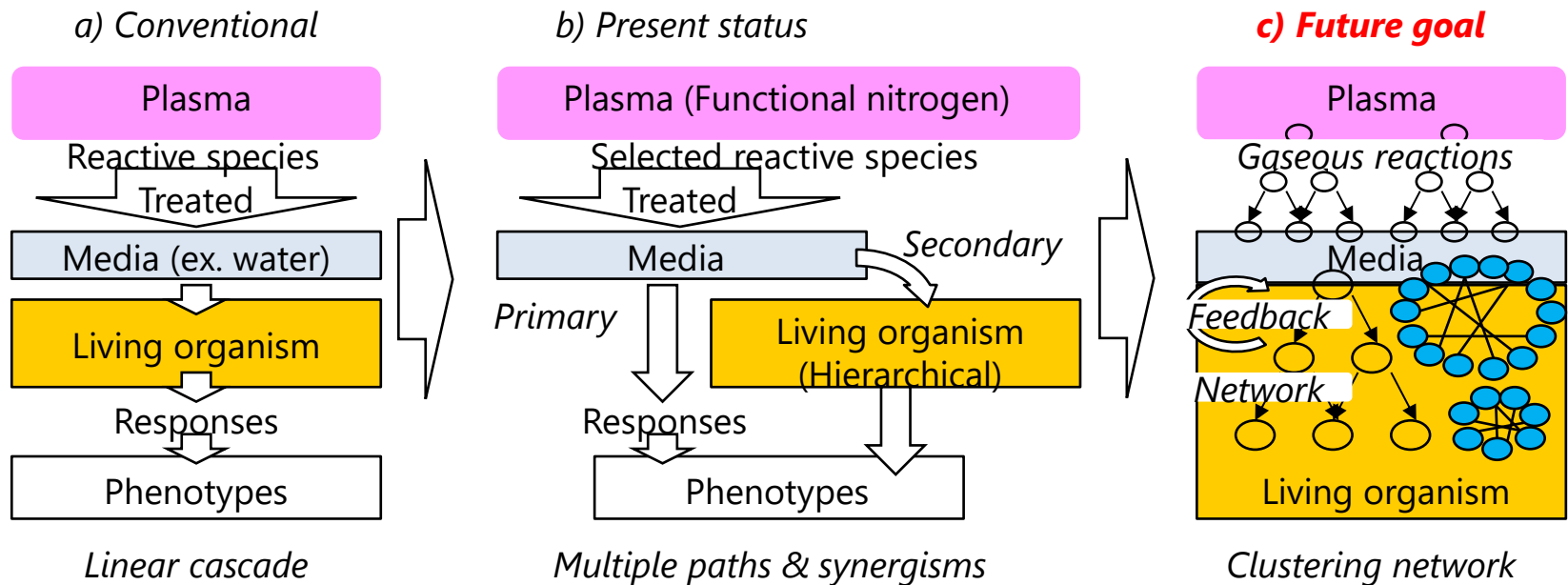
Coherent process: Wave field dynamics



Understanding of complex plasma reactions



- Similarities and differences between animate and inanimate systems. All the multiple pathways quantitatively are analyzed by multiple *in situ* and real-time measurements during this process.

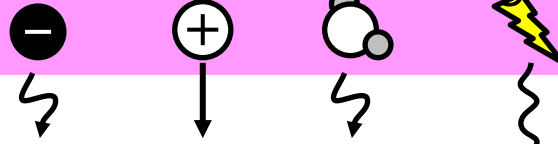


Conclusion - plasma as a tool to open life innovation



Physics
(collisions)

Low temperature plasma
electron ion radical light



Chemistry
(intermolecular reactions)

Gaseous phase

non-equilibrium reaction field

Liquid phase

Interface

bubble radical ions aerosol

Solid

Water

Polymers

Inorganics (Salt, etc.)

Alcohols

Organics (Glucose, Amino acids, etc.)

Biological matters

- Low temperature plasma surface interactions – physics and chemistry - *kinetic* control of reactions
- To elucidate physical actions, chemical reactions (PACR) using multiple in situ analyses at real time during processing.

Acknowledgements



- The authors would like to thank Profs **M. Hori, H. Tanaka, C. Miron, S. Toyokuni, M. Mizuno, H. Kajiyama, K. Nakamura**, (Nagoya U), **H. Toyoda, N. Ohno**, (Nagoya U), **M. Ito** (Meijo U), **Y. Ikehara** (Chiba U); **M. Shiratani**, and **K. Koga** (Kyushu U); **H. Sakakita** (AIST); the **center for low-temperature plasma sciences** and the **Ishikawa-Tanaka (Hori-Sekine) laboratory** members for technical assistances.
- This study was partly supported by JSPS-KAKENHI nos. 20H00142, 21H01073, and 21H04451.

